



Reference illustration

Jacket Water Heater

Factory installed jacket water heater for increased cold-starting capability. The system includes a tank-style metal heater with an integral high limit thermostat and a remote engine mounted control thermostat, durable silicone hoses and heater control relay wired to a common connection point in the control panel. The heater and thermostat location is optimized for maximum coolant flow and heating power efficiency.

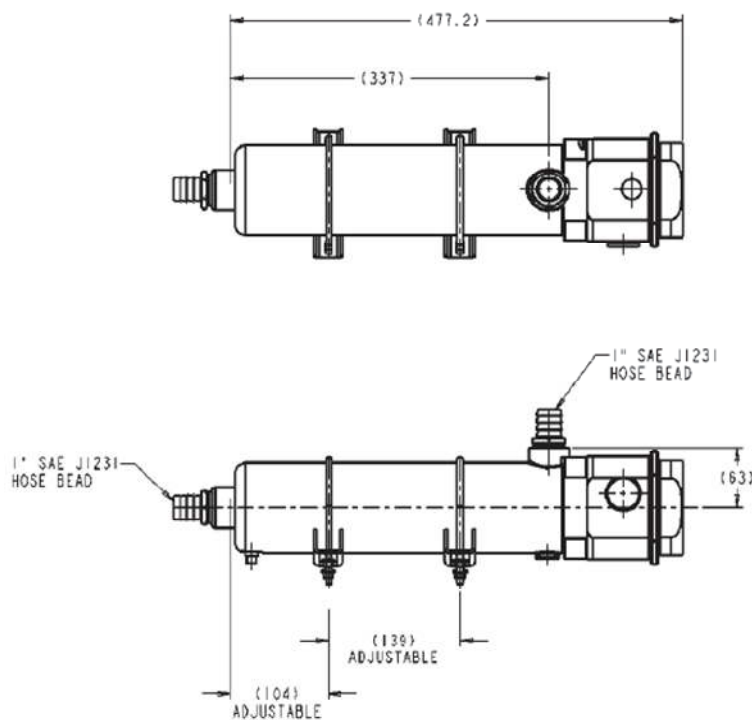
FEATURES

FACTORY INSTALLED

- Complete with silicone hoses
- Isolated tank heater vibration and shock tested to extreme limits to guarantee durability
- Optimized location of the heater on the genset base for maximum coolant flow
- Remote pilot thermostat located on the engine for optimized power cycle efficiency is factory set to 100° F (37.8°C)
- Automatically disconnected when engine is running via a dedicated heater relay located in the control panel.
- Supplied with UL recognized components
- Compatible with Cat® ELC and all chemicals
- All parts are serviceable and field replaceable
- Incoloy heater element for longer service life

Unit Specifications			
	Design Voltage		
	208 V	220 V	240 V
Rating	2250 W	2520 W	3000 W
Frequency	50/60 Hz	50/60 Hz	50/60 Hz
Phase	1	1	1
Amps	10.82	11.45	12.5
Feature Code	JWH0059/JWH00573		

HEATER DETAILS



HEATER OPERATION

The heater uses compliant components to UL and CSA, and is both CSA and UL approved.

When the generator set is not running, the heater is automatically connected to the AC supply through a power relay mounted in the control panel. Upon receiving a start signal, the AC supply is automatically disconnected by the power relay and automatically reconnected when the start signal is removed and the engine has stopped.

Pilot thermostat located on the engine precisely monitors and controls the engine coolant temperature and is wired to energize and de-energize heater power cycles.

A high-limit thermostat is built into the heater to regulate the output temperature to within safe limits.