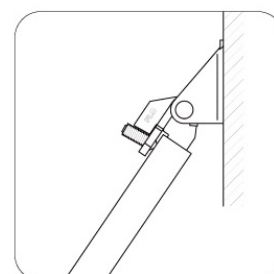
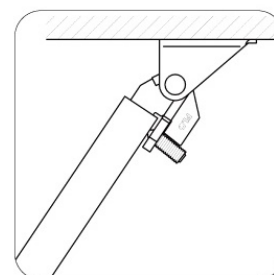
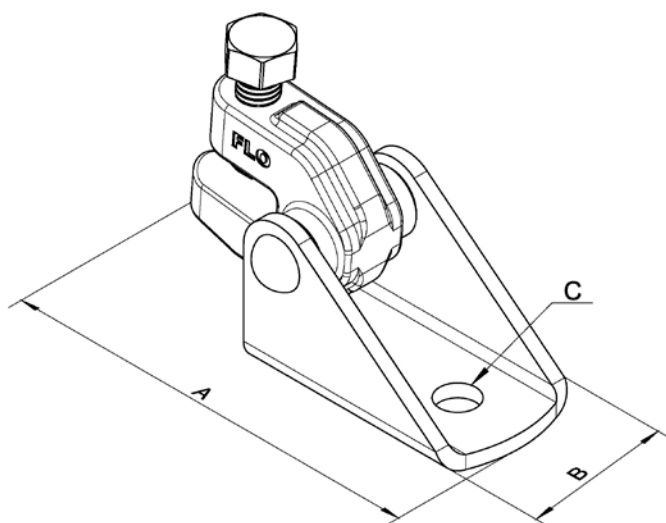


SWAY BRACE COMPONENTS

SSB0101C – Structural Attachment

- **Function:** Multi-functional attachment to building structure or braced pipe clamps.
- **Size:** One size fits braced pipe up to 8", with 1/2" bolt hole for structure.
- **Finish:** Zinc plated. Other finishes upon request.
- **Material:** Carbon steel and ductile iron.
- **Installation:** SSB0101C is the structural or transitional attachment component of a longitudinal or lateral sway bracing assembly. To install, insert the brace member into the clamp, and tighten the break-off bolt until the hex head breaks off.
- **Qualification:** Comply with NFPA 13 and UL listed.



Maximum Design Loads
Lateral & Longitudinal Assemblies

Brace Member	Member Thickness	Member Length	lbs.	kN
1" Pipe	SCH40	Refer to NFPA 13	2015	8.96

Dimensions

Model No.	A	B	C
SSB0101C	123	52	14